

KOH 40-R Full Spectrum Fixture Guide



Indoor | Recessed | Mid output up to 850lm

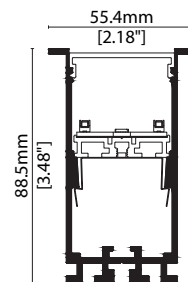


Key applications

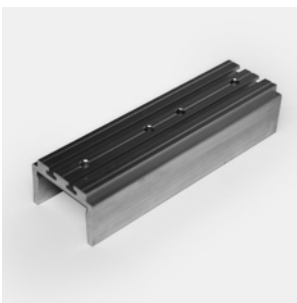
- ✓ Ceiling
- ✓ Office lighting
- ✓ Downlighting
- ✓ Wall grazing
- ✓ Interior

Key features

- ✓ Custom lengths
- ✓ Form factor: Large
- ✓ Decorative
- ✓ High lumen efficacy
- ✓ Diffusion: Homogenous
- ✓ IP40
- ✓ Direct view
- ✓ Lensed
- ✓ Extensive CCT range
- ✓ Output mid



MOUNTING METHODS



KKTJ-03 Joining bar



KKBK-19 Fixing bracket

General

KOH 40-R Full Spectrum Specification sheet



Dimension	H88.5/W55.4/L584-1704mm (H3.48/W2.18/L22.99-67.09in)
Unit length	560/1120/1680mm (22.05/44.09/66.14in)
Chip	n-line Toyoda Gosei
Beam angle	130° (diffuser) /60° (Dark Louvre)
Colours	n-line 2700K/3000K
Bin/Step	n-line 3-step MacAdam ellipse
CRI	≥ 95
Lifetime	50,000 hours @ 25°C (50,000 hours @ 77°F)
Operating temp	T _a = -20 to 45°C (T _c max = 62.9°C) T _a = -4 to 113°F (T _c max = 145.2°F)
IP rating	IP40
Finish	Matt Silver/Grey/White/Black/Bronze Powder Coated
Cover/lens	Diffused/Prismatic/Louvre + Frosted Cover
Mounting	Recessed mounting via bracket
Power feed	Male/female connectors
Control	0-10V/DALI (Integrated Power Supply)



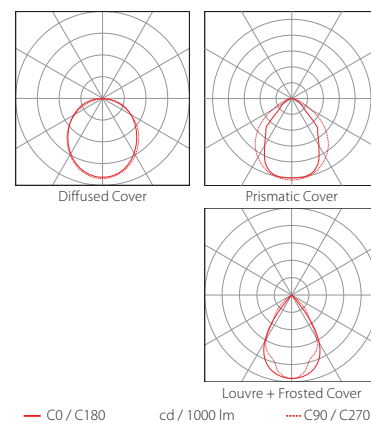
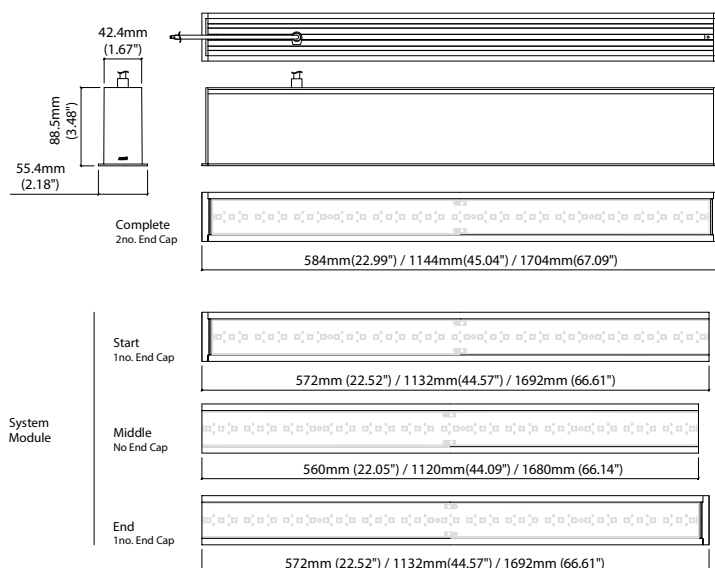
LED Grading Key

Exclusive Grade		
n-line*	Full visible spectrum NO UV or IR 380nm-780nm 3-step CCT range	*KKDC tuned CCT range

PERFORMANCE DATA @ 3000K / @ 580MM COMPLETE MODULE (22.84IN)

Power consumption	Supply voltage	Supply current	Power factor
18.5W	240V AC 50Hz	0.085A	0.94 @ 239.99V, 50Hz

	Diffused Cover	Prismatic Cover	Louvre + Frosted Cover	CRI	R9	Rf	Rg
n-line	720lm 38.3lm/W	850lm 45.4lm/W	350lm 18.4lm/W	95	74	94	100



Data derived from independent UKAS/IESNA LM-79-08 accredited testing of production samples.

KOH 40-R Full Spectrum

Code Table



FIXTURE

Model	Finish	Cover	Grade	LED Type ¹	Colour (CCT)	Length Availability ²	Lens	Module Type*	Control Type	Input								
KOH 40-R	Matt White Paint	MW	Louvre	T	Full Spectrum	532B	Frosted lens	FL	Complete	FE	0-10V	4	AC 100V	b				
	Matt Silver Paint	MS	Diffused	C		2700K									27	580mm	m	0580
	Matt Grey Paint	MG	Prismatic	G		3000K									30	1140mm	m	1140
	Matt Black Paint	MB				1700mm									m	1700		
	Bronze Paint	BP				22.05in									i	0022		
				44.09in	i	0044												
				66.14in	i	0066												

¹ Refer to **LED Grading Key** on **Specification sheet** page

² Refer to **Length Availability List** or enter total run length instead of length code

* Module Type (various fixture lengths)

Complete	FE	
Start	LE	
Middle	XE	
End	RE	

Code Example:

GB	-	MW	-	C	-	n	-	532B	-	30	-	m	-	1140	-	FL	-	FE	-	4	-	d
KOH 40-R		Matt White Paint		Diffused				Full Spectrum		3000K				1140mm		Frosted lens		Complete		0-10V		AC 220-240V

ACCESSORIES

Mounting Accessories

KKJT-03	Joining Bar
KKBK-19	Fixing bracket

* Refer to **Mounting accessories** on **Accessories** pages

Connection Accessories

KKCN-26	Power Feed Cable
KKCN-31	Power Feed Cable (Non-Fabric)

* Refer to **Power feed** on **Accessories** pages

PSU/Driver

0-10V/DALI (Integrated Power Supply)

LED ENGINE VARIANTS (LED STRIP TYPE)

Colour	Output	LED	Lumen/module	Wattage	Spec Doc	Length
Single CCT	Mid	532B	850/module	18.5	KOH 40-R Full Spectrum	560/1120/1680mm (22.05/44.10/66.14in)
	Max	630A	1170/module	17.5	KOH 40-R High CRI	560/1120/1680mm (22.05/44.10/66.14in)
	Mid	957A	2190/module	33.5	KOH 40-R High Power	560/1120/1680mm (22.05/44.10/66.14in)

* Performance data: n-line, prismatic cover, 3000K, 580mm module

KOH 40-R Full Spectrum Length Availability List



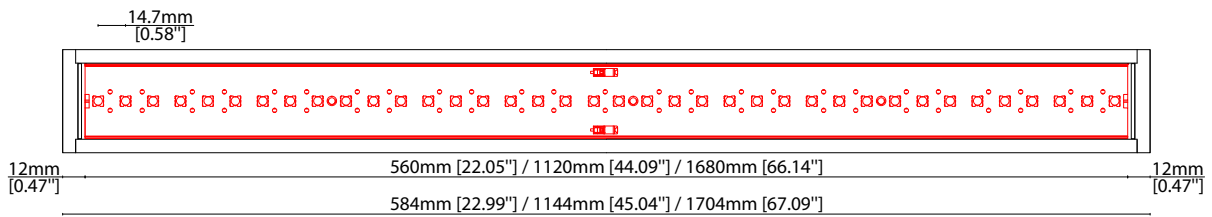
KOH 40-R Full Spectrum

Length Code		Fixture Length ¹		LED Strip ²		End Cap Dimension ³		Wattage (W)	Output (lm)	
Metric	Imperial(US)	Metric	Imperial(US)	Metric	Imperial(US)	Metric	Imperial(US)		3000K (Test Data)	Range Data
m0584	i0023	584mm	22.99in	560mm	22.05in	14mm	0.55in	18.5	840	272-873
m1144	i0045	1144mm	45.04in	1120mm	44.09in	14mm	0.55in	37	1680	545-1747
m1704	i0067	1704mm	67.09in	1680mm	66.14in	14mm	0.55in	55.5	2520	817-2620

¹ Actual total overall length of light fixture (LED strip + end caps + void/wire hole)

² Actual length of PCB strip

³ Actual length of 2x end caps



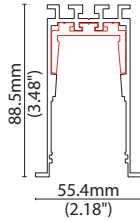
MOUNTING ACCESSORIES

Note: Accessories are to be ordered separately with corresponding code shown below.



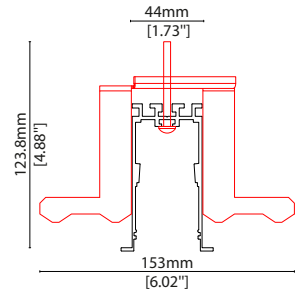
KKJT-03

Joining bar
(allow 1 per join)
L120/W38.3/H26.3mm
(L4.72/W1.50/H1.03")



KKBK-19

Fixing bracket
(allow 2 per metre/40in)
S/Steel finish
L50/W153/H118mm
(L1.97/W6.02/H4.65")



POWER CABLE



KKCN-26

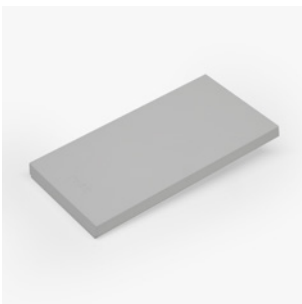
Power Feed Cable



KKCN-31

Power Feed Cable (Non-Fabric)

END CAPS AND LIGHT LEAK TAPE



- KKEC-S1 (2no.)** - End cap pair (Mat white)
- KKEC-S2 (2no.)** - End cap pair (Mat silver)
- KKEC-S3 (2no.)** - End cap pair (Mat gray)
- KKEC-S4 (2no.)** - End cap pair (Mat black)
- KKEC-S5 (2no.)** - End cap pair (Bronze)



Black tape (prevents light leak)